

FL Series 3

FL Series 3 Medium



Product Description

The FL Series 3 Floodlight provides general area lighting and improve the overall look of façades and signage.

The slim, low profile design adds architectural appeal to any general flood lighting application with crisp uniform white light that offer high performance maximizing energy savings. With remarkable light quality and smooth white light, buildings and signage will stand out in the crowd.

Applications: Industry, parking lots, monuments and general area spaces.

Performance Summary

Efficacy: Up to 135 lm/W

IP66

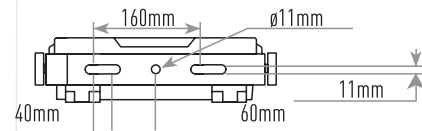
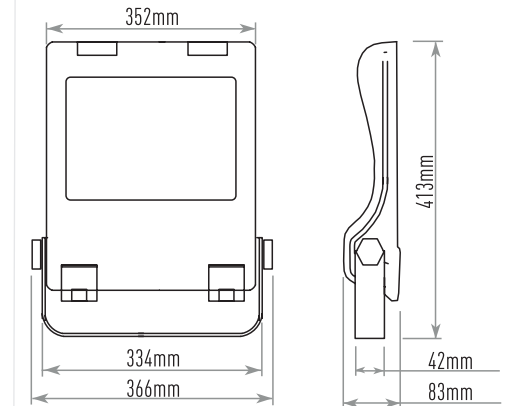
Lumen Output: 10800 - 20000 Lm

CRI: Minimum 70 CRI

CCT: 4000K

Initial Colour consistency: 5 MacAdam steps

Limited Warranty: 5 Years



Ordering Information

Example: FL3-ASM-A-40K-+-24-BK-01

FL3	-	ASM	-	B	-	40K	-	+	-	24	-	BK	-	FX	-	01
Product		Optic		Input Power		CCT		Insulation Class		Voltage		Color		Options		Cable length
FL3	-	ASM Asymmetric	-	C 100W	-	40K Ra70	-	+ Class 1	-	24 220-240V	-	BK Black	-	FX Fixed Output	-	01 Exit cable 1,5 m
		WFL Wide Flood		D 150W												
		30 Flood 30°														
		15 Spot 15°														



FL Series 3 Medium

Product Specifications

CONSTRUCTION & MATERIALS

- Die cast aluminum housing treated with electrophoresis and powder coating for strong anti-corrosion performance.
- Extra clear silk printed tempered glass
- Bracket surface featuring hot galvanizing processing, providing strong corrosion resistance.
- Tool-less entry through buckles integrated
- Tool free adjustable bracket +/-90° by means of mechanical
- locking with graduated scale of 10°
- Vent integrated to prevent moisture and balance atmosphere pressure
- Lifetime: L80F10 Up to >125Khrs Ta=25°C (>125Khrs L80 IESNA TM-21)
- Operative temperature -30°C up to 40°C

ELECTRICAL SYSTEM

- **Input Voltage:** 220-240V, 50/60Hz
- **Power factor:** Up to > 0.92 at full load
- **Surge protection:** 10kV CM / 6kV DM surge immunity according to EN 61000-4-5 and EN 61547

REGULATORY & VOLUNTARY QUALIFICATIONS

- CE Listed
- ENEC Listed
- RoHs compliant
- CB Mark
- Risk group exempt in accordance with Standard CEI EN 62471 for photobiological safety (Tested IEC/TR62778)
- Enclosure rated IP66 per IEC 60529
- Impact resistance IK08
- Luminaire and finish endurance tested to withstand 2,500 hours of elevated ambient salt fog conditions as defined in ASTM Standard B 117
- Compliant to: EN 60598-1; EN 60598-2-3

Electrical Data*			
Input Power Designator	System Watts 220-240V	Total Current	Power Factor
		@230V, 50Hz	
C	100	0.43A	0,92
D	150	0.64A	0,92

* Electrical data at 25°C (77°F)

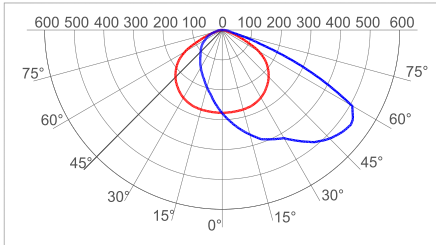
Weight and Maximum Wind Area	
Weight	Lateral Surface Wind Exposed
6,8 kg	

FL Series 3 Medium

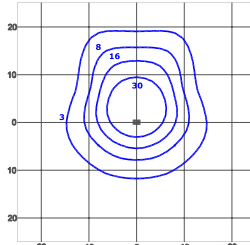
Photometry

All published luminaire photometric testing performed to IESNA LM-80-08 standards by a NVLAP certified laboratory. To obtain an IES file specific to your project consult: <http://www.iluxlighting.co.uk>.

ASM - Asymmetric



cd/klm
— C0 - C180 — C90 - C270 — C15 - C195

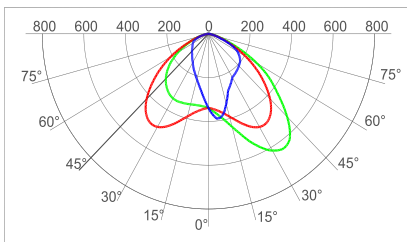


lux
FL3-ASM-C-40K--+24-BK-FX-01
Mounting Height: 8m

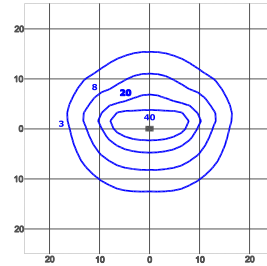
Lumen Output - Asymmetric	
Input Power	4000K
Power Designator	Initial Delivered Lumens*
C	13496
D	20292

* Initial delivered lumens at 25°C (77°F). Actual production yield may vary between -4 and +10% of initial delivered lumens

WFL - Wide Flood



cd/klm
— C0 - C180 — C90 - C270 — C15 - C195

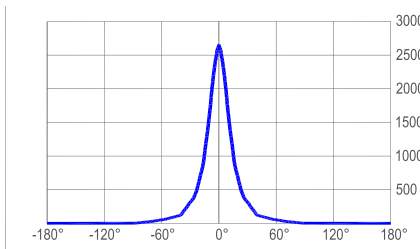


lux
FL3-WFL-C-40K--+24-BK-FX-01
Mounting Height: 8m

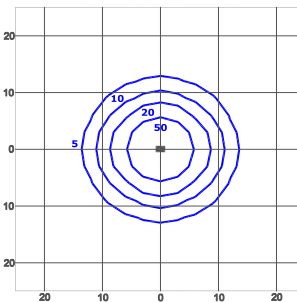
Lumen Output - Wide Flood	
Input Power	4000K
Power Designator	Initial Delivered Lumens*
C	13516
D	19973

* Initial delivered lumens at 25°C (77°F). Actual production yield may vary between -4 and +10% of initial delivered lumens

30° - Flood 30°



cd/klm
— C0 - C180

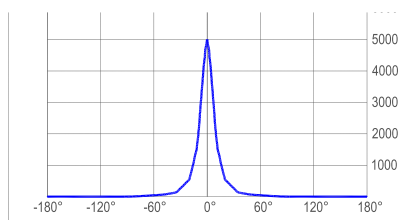


lux
FL3-30-D-40K--+24-BK-FX-01
Mounting Height: 15m

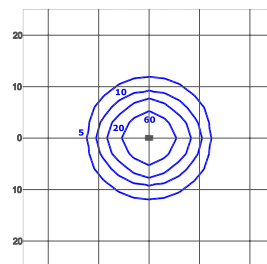
Lumen Output - Flood 30°	
Input Power	4000K
Power Designator	Initial Delivered Lumens*
C	14035
D	20755

* Initial delivered lumens at 25°C (77°F). Actual production yield may vary between -4 and +10% of initial delivered lumens

15° - Flood 15°



cd/klm
— C0 - C180



lux
FL3-15-D-40K--+24-BK-FX-01
Mounting Height: 15m

Lumen Output - Flood 15°	
Input Power	4000K
Power Designator	Initial Delivered Lumens*
C	14348
D	21417

* Initial delivered lumens at 25°C (77°F). Actual production yield may vary between -4 and +10% of initial delivered lumens